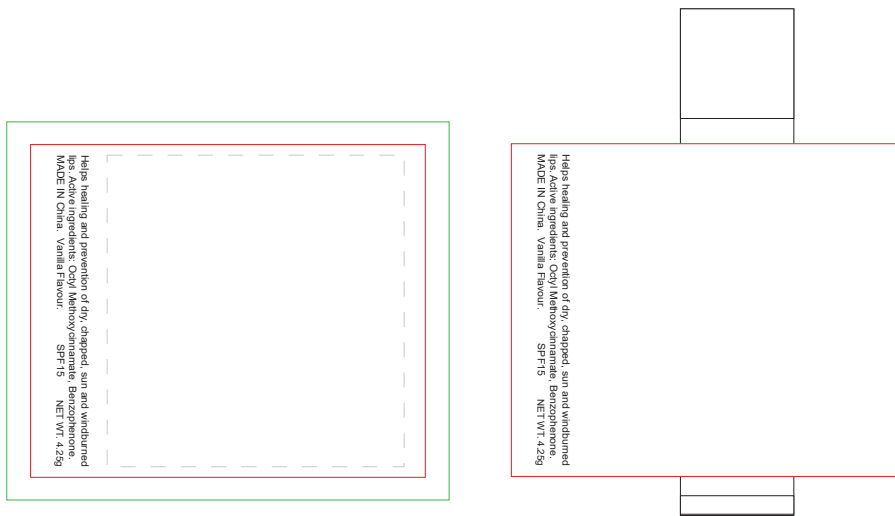


# JOB NO. XXXXXX

## LB11.H606 - Vanilla Lip Balm

<b>Product Colour/s</b> White	<b>Product Size</b> 15mm W x 67mm H	<b>Actual Print Size</b> 52.2mm W x 44mm H
<b>Print colour/s</b> (Please specify print colour/s here)	<b>Print Method</b> <input type="checkbox"/> Digital Label (Wrap): 52.2mm W x 44mm H <input type="checkbox"/> Variable Data (Wrap): 52.2mm W x 44mm H	

QTY:



- - - - Print Area (Please keep important elements within this area)
- Cut Line (This is where your artwork will be trimmed off)
- Bleed area (Artwork that reaches in this area will be trimmed off)

### ARTWORK (100% approx.)

NEW/REPEAT ORDER/REDO/BACK ORDER

#### Additional Notes/Art Instructions:

\*Special art instructions that needs to be noted shall be placed here. If none, this note must be removed.

#### Disclaimer:

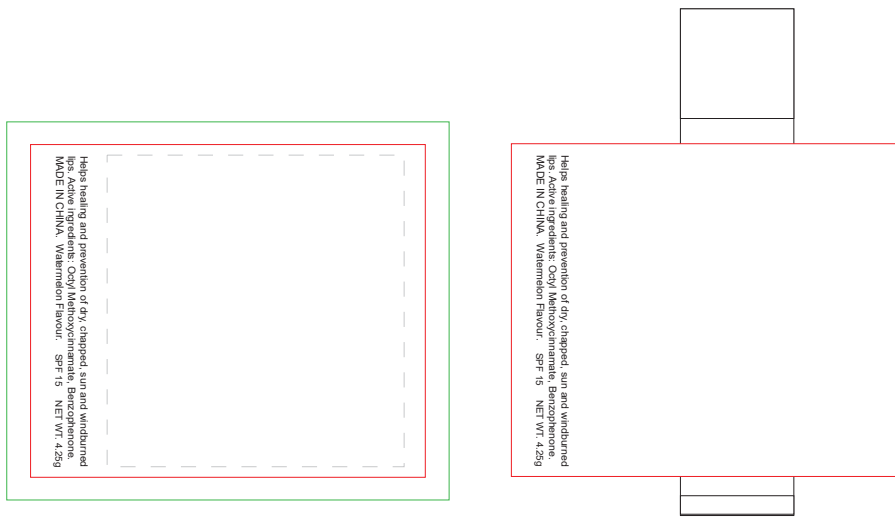
Colour proofs are to be used as a guide only.  
Line drawing is for approximate print positional guide only.  
Please familiarise yourself with the product prior to approving.  
It is not intended to be an exact scale or detailed representation.  
Small details or text, including ®©™, may fill in and not be legible.  
Dotted lines will not be printed and are for maximum print guide only.  
The fine lines and details in your logo may not be able to be produced clearly.

# JOB NO. XXXXXX

## LB11.H608 - Watermelon Lip Balm

<b>Product Colour/s</b> White	<b>Product Size</b> 15mm W x 67mm H	<b>Actual Print Size</b> 52.2mm W x 44mm H
<b>Print colour/s</b> (Please specify print colour/s here)	<b>Print Method</b> <input type="checkbox"/> Digital Label (Wrap): 52.2mm W x 44mm H <input type="checkbox"/> Variable Data (Wrap): 52.2mm W x 44mm H	

QTY:



- - - - Print Area (Please keep important elements within this area)
- Cut Line (This is where your artwork will be trimmed off)
- Bleed area (Artwork that reaches in this area will be trimmed off)

### ARTWORK (100% approx.)

NEW/REPEAT ORDER/REDO/BACK ORDER

#### Additional Notes/Art Instructions:

\*Special art instructions that needs to be noted shall be placed here. If none, this note must be removed.

#### Disclaimer:

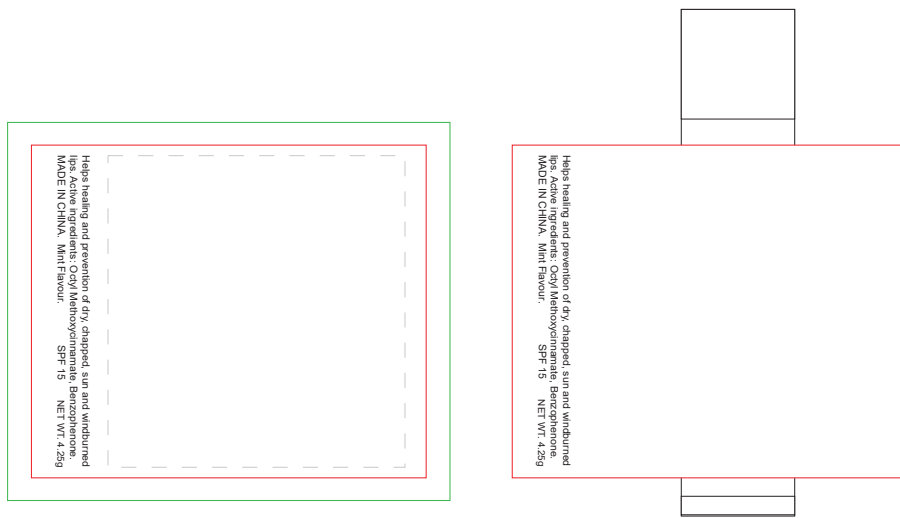
Colour proofs are to be used as a guide only.  
 Line drawing is for approximate print positional guide only.  
 Please familiarise yourself with the product prior to approving.  
 It is not intended to be an exact scale or detailed representation.  
 Small details or text, including ®©™, may fill in and not be legible.  
 Dotted lines will not be printed and are for maximum print guide only.  
 The fine lines and details in your logo may not be able to be produced clearly.

# JOB NO. XXXXXX

## LB11.H609 - Mint Lip Balm

<b>Product Colour/s</b> White	<b>Product Size</b> 15mm W x 67mm H	<b>Actual Print Size</b> 52.2mm W x 44mm H
<b>Print colour/s</b> (Please specify print colour/s here)	<b>Print Method</b> <input type="checkbox"/> Digital Label (Wrap): 52.2mm W x 44mm H <input type="checkbox"/> Variable Data (Wrap): 52.2mm W x 44mm H	

QTY:



- Print Area (Please keep important elements within this area)
- Cut Line (This is where your artwork will be trimmed off)
- Bleed area (Artwork that reaches in this area will be trimmed off)

### ARTWORK (100% approx.)

NEW/REPEAT ORDER/REDO/BACK ORDER

#### Additional Notes/Art Instructions:

\*Special art instructions that needs to be noted shall be placed here. If none, this note must be removed.

#### Disclaimer:

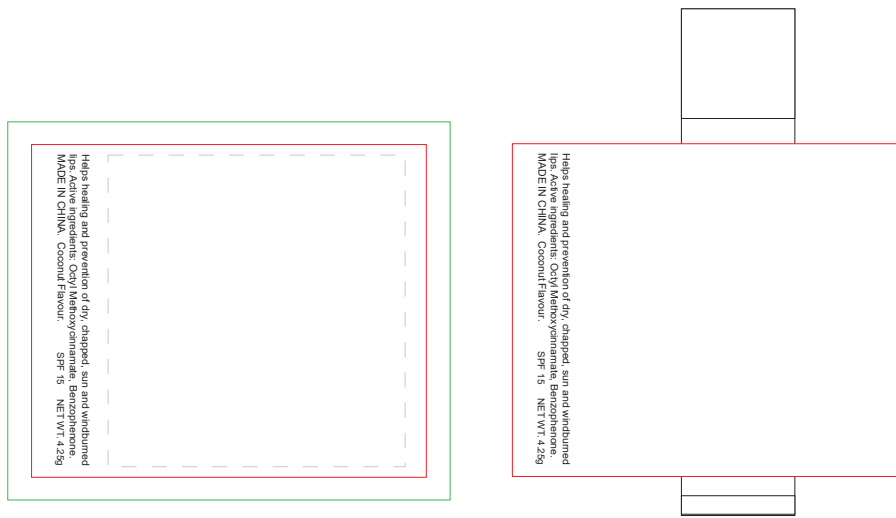
Colour proofs are to be used as a guide only.  
Line drawing is for approximate print positional guide only.  
Please familiarise yourself with the product prior to approving.  
It is not intended to be an exact scale or detailed representation.  
Small details or text, including ®©™, may fill in and not be legible.  
Dotted lines will not be printed and are for maximum print guide only.  
The fine lines and details in your logo may not be able to be produced clearly.

# JOB NO. XXXXXX

## LB11.H612 - Coconut Lip Balm

<b>Product Colour/s</b> White	<b>Product Size</b> 15mm W x 67mm H	<b>Actual Print Size</b> 52.2mm W x 44mm H
<b>Print colour/s</b> (Please specify print colour/s here)	<b>Print Method</b> <input type="checkbox"/> Digital Label (Wrap): 52.2mm W x 44mm H <input type="checkbox"/> Variable Data (Wrap): 52.2mm W x 44mm H	

QTY:



- Print Area (Please keep important elements within this area)
- Cut Line (This is where your artwork will be trimmed off)
- Bleed area (Artwork that reaches in this area will be trimmed off)

### ARTWORK (100% approx.)

NEW/REPEAT ORDER/REDO/BACK ORDER

#### Additional Notes/Art Instructions:

\*Special art instructions that needs to be noted shall be placed here. If none, this note must be removed.

#### Disclaimer:

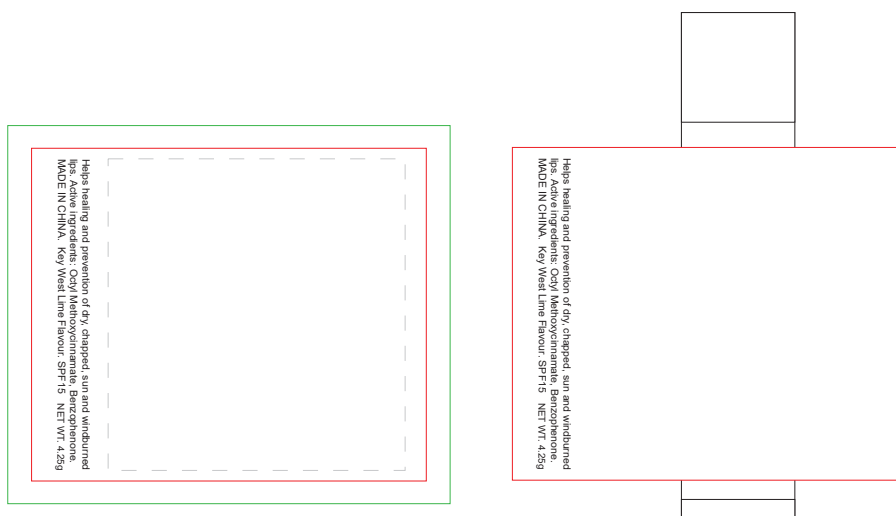
Colour proofs are to be used as a guide only.  
 Line drawing is for approximate print positional guide only.  
 Please familiarise yourself with the product prior to approving.  
 It is not intended to be an exact scale or detailed representation.  
 Small details or text, including ®©™, may fill in and not be legible.  
 Dotted lines will not be printed and are for maximum print guide only.  
 The fine lines and details in your logo may not be able to be produced clearly.

# JOB NO. XXXXXX

## LB11.H613 - Lime Lip Balm

<b>Product Colour/s</b> White	<b>Product Size</b> 15mm W x 67mm H	<b>Actual Print Size</b> 52.2mm W x 44mm H
<b>Print colour/s</b> (Please specify print colour/s here)	<b>Print Method</b> <input type="checkbox"/> Digital Label (Wrap): 52.2mm W x 44mm H <input type="checkbox"/> Variable Data (Wrap): 52.2mm W x 44mm H	

QTY:



- Print Area (Please keep important elements within this area)
- Cut Line (This is where your artwork will be trimmed off)
- Bleed area (Artwork that reaches in this area will be trimmed off)

### ARTWORK (100% approx.)

NEW/REPEAT ORDER/REDO/BACK ORDER

#### Additional Notes/Art Instructions:

\*Special art instructions that needs to be noted shall be placed here. If none, this note must be removed.

#### Disclaimer:

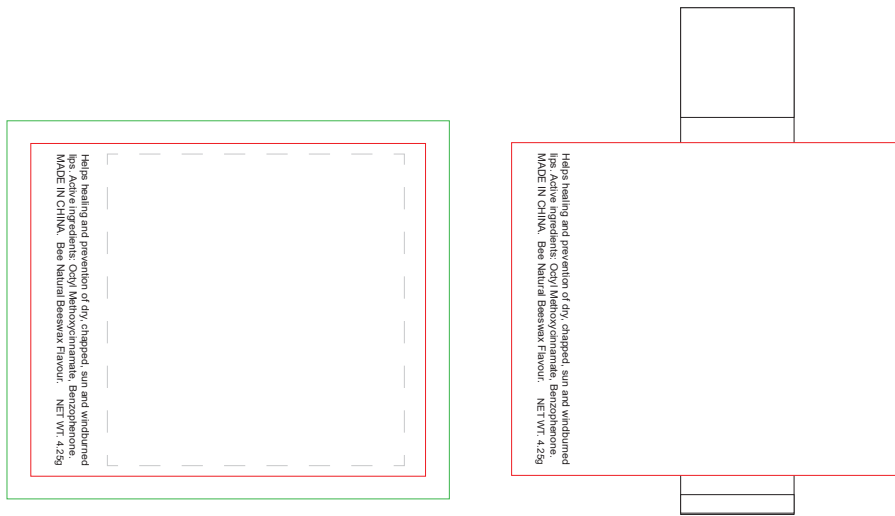
Colour proofs are to be used as a guide only.  
Line drawing is for approximate print positional guide only.  
Please familiarise yourself with the product prior to approving.  
It is not intended to be an exact scale or detailed representation.  
Small details or text, including ®©™, may fill in and not be legible.  
Dotted lines will not be printed and are for maximum print guide only.  
The fine lines and details in your logo may not be able to be produced clearly.

# JOB NO. XXXXXX

## LB11.H615 - Beeswax Lip Balm

<b>Product Colour/s</b> White	<b>Product Size</b> 15mm W x 67mm H	<b>Actual Print Size</b> 52.2mm W x 44mm H
<b>Print colour/s</b> (Please specify print colour/s here)	<b>Print Method</b> <input type="checkbox"/> Digital Label (Wrap): 52.2mm W x 44mm H <input type="checkbox"/> Variable Data (Wrap): 52.2mm W x 44mm H	

QTY:



- - - - Print Area (Please keep important elements within this area)
- Cut Line (This is where your artwork will be trimmed off)
- Bleed area (Artwork that reaches in this area will be trimmed off)

### ARTWORK (100% approx.)

NEW/REPEAT ORDER/REDO/BACK ORDER

#### Additional Notes/Art Instructions:

\*Special art instructions that needs to be noted shall be placed here. If none, this note must be removed.

#### Disclaimer:

Colour proofs are to be used as a guide only.  
 Line drawing is for approximate print positional guide only.  
 Please familiarise yourself with the product prior to approving.  
 It is not intended to be an exact scale or detailed representation.  
 Small details or text, including ®©™, may fill in and not be legible.  
 Dotted lines will not be printed and are for maximum print guide only.  
 The fine lines and details in your logo may not be able to be produced clearly.